



Regd. No. 732/2006

Mobile: 8499831950

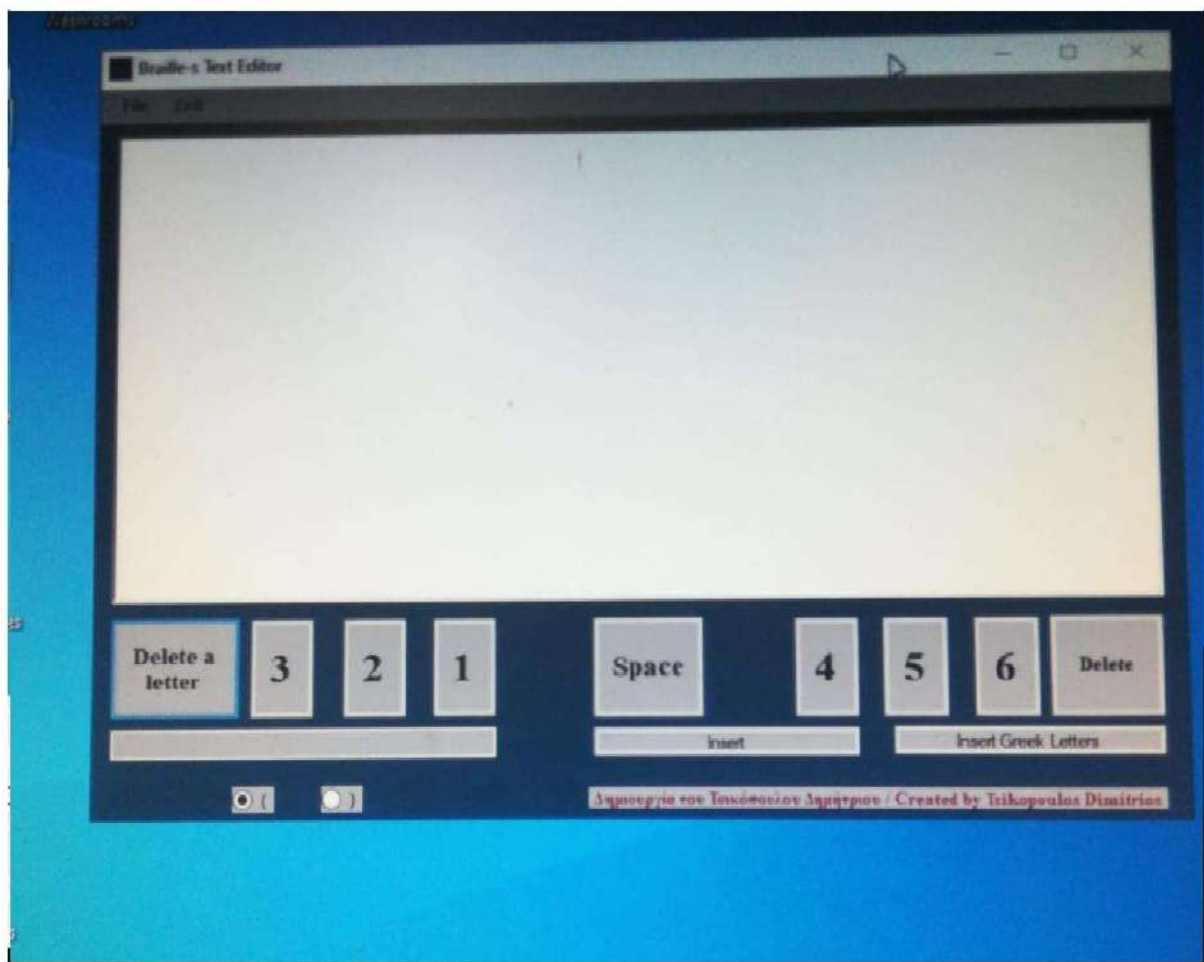
# PRATISHTA INSTITUTE OF PHARMACEUTICAL SCIENCES

Approved by AICTE & PCI, New Delhi, Affiliated to JNTU and SBTET, Hyderabad & Recognised by Govt of Telangana  
Duraipally (V), Ghivemla (M), Suryapet District - 508 214, Telangana

Website : [www.pratishthapharmacy.in](http://www.pratishthapharmacy.in), E-mail : [pratishta.pharmacy@yahoo.com](mailto:pratishta.pharmacy@yahoo.com)

## 7.1.7 ASSISTIVE TECHNOLOGY AND FACILITIES FOR PERSONS WITH DISABILITIES:

To assist visually challenged students Braille's editor software is installed in computers and speaker is provided. But so far no visually challenged students have joined in the college



Software downloaded from (<https://sourceforge.net/projects/brailles/>)

  
**PRINCIPAL**  
Pratishta Institute of Pharmaceutical Sciences  
Duraipally (V), Ghivemla (M), Suryapet (DL)-508213.



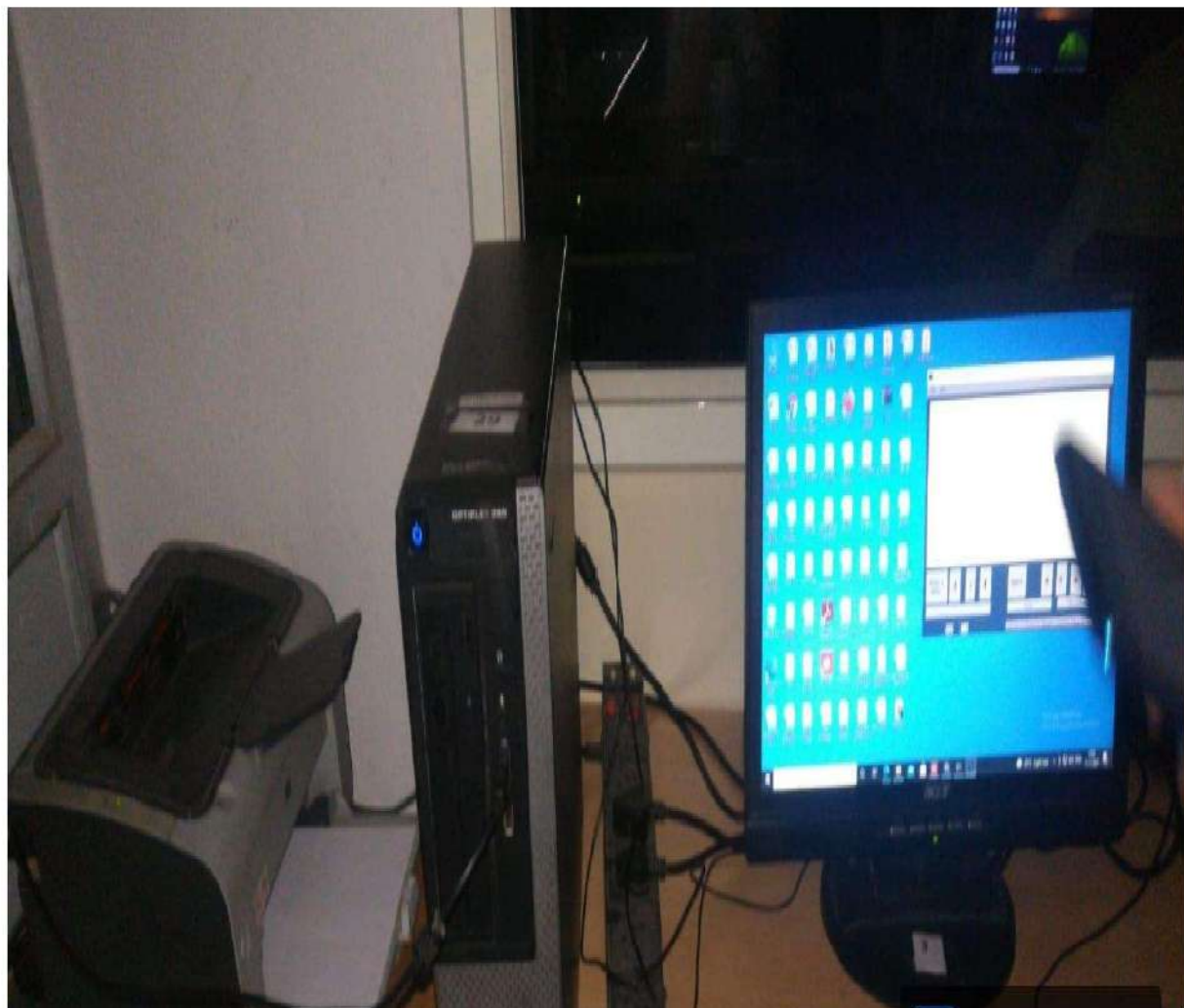
Regd. No. 732/2006

Mobile: 8499831950

# PRATISHTA INSTITUTE OF PHARMACEUTICAL SCIENCES

Approved by AICTE & PCI, New Delhi, Affiliated to JNTU and SBTET, Hyderabad & Recognised by Govt of Telangana  
Duraipally (V), Chivemla (M), Suryapet District - 508 214, Telangana

Website : [www.pratishthapharmacy.in](http://www.pratishthapharmacy.in), E-mail : [pratishtha-pharmacy@yahoo.com](mailto:pratishtha-pharmacy@yahoo.com)



  
**PRINCIPAL**  
Pratishtha Institute of Pharmaceutical Sciences  
Duraipally (V), Chivemla (Mdt.) Suryapet (Dt.)-508213.



Regd. No. 732/2006

Mobile: 8499831950

## **PRATISHTA INSTITUTE OF PHARMACEUTICAL SCIENCES**

Approved by AICTE & PCI, New Delhi, Affiliated to JNTU and SBTET, Hyderabad & Recognised by Govt of Telangana  
Durajpally (V), Ghivemla (M), Suryapet District - 508 214, Telangana  
Website : [www.pratishthapharmacy.in](http://www.pratishthapharmacy.in), E-mail : [pratishtha-pharmacy@yahoo.com](mailto:pratishtha-pharmacy@yahoo.com)

### **7.1.7 THE INSTITUTION HAS DISABLED-FRIEND BUILT ENVIRONMENT WITH RAMPS/LIFTS FOR EASY ACCESS TO CLASSROOMS:**

It has been felt that differently-abled persons need special arrangements in the PIPS College premises for their mobility and independent functioning. PIPS has architectural barrier free environment that disabled persons find easy for their day-to-day functioning. The college addresses the accessibility relevant issues as per the stipulations of the Persons with Disabilities Act 1995. All the existing infrastructure in the college is disabled-friendly and PIPS ensures that the future construction will also be based on the principle of inclusion. The institute has special facilities such as Wheel chairs, Walkers, Lifts, Ramps, Hand Rails, Special Toilets, and other necessary changes to meet the needs of differently-abled persons.

#### **PHYSICAL FACILITIES:**

The classes for differently-abled students are conducted on the ground floor for their convenience. Mobility devices like Wheel Chairs and Walker are made available in major buildings.

  
**PRINCIPAL**  
Pratishta Institute of Pharmaceutical Sciences  
Durajpally (V), Ghivemla (Mdt.) Suryapet (Dt.)-508213.



Regd. No. 732/2006

Mobile: 8499831950

# PRATISHTA INSTITUTE OF PHARMACEUTICAL SCIENCES

Approved by AICTE & PCI, New Delhi, Affiliated to JNTU and SBTET, Hyderabad & Recognised by Govt of Telangana  
Durajpally (V), Chivemla (M), Suryapet District - 508 214, Telangana  
Website : [www.pratishthapharmacy.in](http://www.pratishthapharmacy.in), E-mail : [pratishtha-pharmacy@yahoo.com](mailto:pratishtha-pharmacy@yahoo.com)



  
**PRINCIPAL**  
Pratishtha Institute of Pharmaceutical Sciences  
Durajpally (V), Chivemla (M), Suryapet (DL)-508213.



Regd. No. 732/2006

Mobile: 8499831950

## **PRATISHTHA INSTITUTE OF PHARMACEUTICAL SCIENCES**

Approved by AICTE & PCI, New Delhi. Affiliated to JNTU and SBTE, Hyderabad & Recognised by Govt of Telangana  
Durajpally (V), Ghivemla (M), Suryapet District - 508 214, Telangana

Website : [www.pratishthapharmacy.in](http://www.pratishthapharmacy.in), E-mail : [pratishtha.pharmacy@yahoo.com](mailto:pratishtha.pharmacy@yahoo.com)

### **7.1.7. THE INSTITUTION HAS DISABLED-FRIEND BUILT ENVIRONMENT WITH RAMPS/LIFTS FOR EASY ACCESS TO CLASSROOMS:**

Apart from stair access and lifts, PIPS blocks are constructed with Ramps and Hand Rails as sloped pathways used to provide access to outside buildings. Ramps provide an alternative to stairs for wheelchair users, people with mobility issues and people with prams, bicycles and other wheeled items. Adequate space is allocated for persons using mobility devices, as well as those walking with the assistance of other persons.



  
**PRINCIPAL**  
Pratishtha Institute of Pharmaceutical Sciences  
Durajpally (V), Ghivemla (Mdi.) Suryapet (Dt.)-508213.



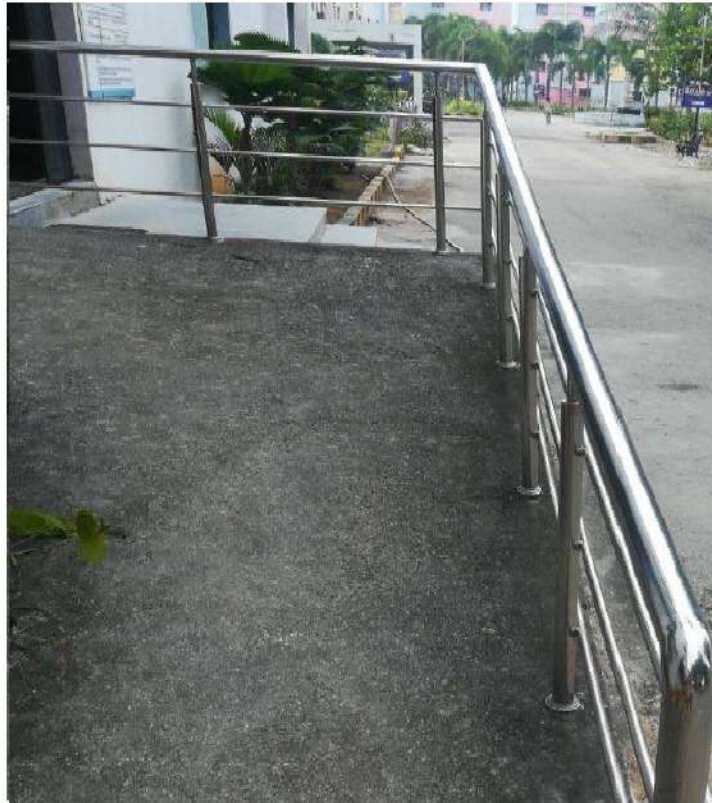
Regd. No. 732/2006

Mobile: 8499831950

# PRATISHTHA INSTITUTE OF PHARMACEUTICAL SCIENCES

Approved by AICTE & PCI, New Delhi, Affiliated to JNTU and SBTET, Hyderabad & Recognised by Govt of Telangana  
Durajpally (V), Chivemla (M), Suryapet District - 508 214, Telangana

Website : [www.pratishthapharmacy.in](http://www.pratishthapharmacy.in), E-mail : [pratishtha.pharmacy@yahoo.com](mailto:pratishtha.pharmacy@yahoo.com)



**PRINCIPAL**

Pratishtha Institute of Pharmaceutical Sciences  
Durajpally (V), Chivemla (M), Suryapet (DL)-508213,



Regd. No. 732/2006

Mobile: 8499831950

## **PRATISHTA INSTITUTE OF PHARMACEUTICAL SCIENCES**

Approved by AICTE & PCI, New Delhi, Affiliated to JNTU and SBTET, Hyderabad & Recognised by Govt of Telangana  
Duraipally (V), Chivemla (M), Suryapet District - 508 214, Telangana

Website : [www.pratishthapharmacy.in](http://www.pratishthapharmacy.in), E-mail : [pratishtha.pharmacy@yahoo.com](mailto:pratishtha.pharmacy@yahoo.com)



**PRINCIPAL**

Pratishta Institute of Pharmaceutical Sciences  
Duraipally (V), Chivemla (Mdl.) Suryapet (DL)-508213.



Regd. No. 732/2006

Mobile: 8499831950

## **PRATISHTA INSTITUTE OF PHARMACEUTICAL SCIENCES**

Approved by AICTE & PCI, New Delhi, Affiliated to JNTU and SBTET, Hyderabad & Recognised by Govt of Telangana  
Durajpally (V), Ghivemla (M), Suryapet District - 508 214, Telangana  
Website : [www.pratishthapharmacy.in](http://www.pratishthapharmacy.in), E-mail : [pratishtha.pharmacy@yahoo.com](mailto:pratishtha.pharmacy@yahoo.com)

### **SCRIBES FOR EXAMINATION:**

PIPS provides scribes for differently-abled students if required during examinations. As per the JNTUH and AICTE rules of examinations.

**JNTUH:** Proceeding No. JNTUH/EB/11148/2/ Concessions extended to the Physically Challenged Students/2018

**AICTE:** F.No.AICTE/e-Gov/230/2015-16- Disable friendly examination centre for candidates with disabilities – Order of Court of Chief Commissioner for Persons with Disabilities

  
**PRINCIPAL**  
Pratishta Institute of Pharmaceutical Sciences  
Durajpally (V), Ghivemla (Mdi.) Suryapet (Dt.)-508213.





Regd. No. 732/2006

Mobile: 8499831950

# PRATISHTHA INSTITUTE OF PHARMACEUTICAL SCIENCES

Approved by AICTE & PCI, New Delhi, Affiliated to JNTU and SBTET, Hyderabad & Recognised by Govt of Telangana  
Duraipally (V), Chivemla (M), Suryapet District - 508 214, Telangana

Website : [www.pratishthapharmacy.in](http://www.pratishthapharmacy.in), E-mail : [pratishtha-pharmacy@yahoo.com](mailto:pratishtha-pharmacy@yahoo.com)



  
**PRINCIPAL**  
Pratishtha Institute of Pharmaceutical Sciences  
Duraipally (V), Chivemla (Mdl.) Suryapet (DL)-508213.



Regd. No. 732/2006

Mobile: 9499831950

## **PRATISHTA INSTITUTE OF PHARMACEUTICAL SCIENCES**

Approved by AICTE & PCI, New Delhi, Affiliated to JNTU and SBTET, Hyderabad & Recognised by Govt of Telangana  
Duraipally (V), Chivemla (M), Suryapet District - 508 214, Telangana  
Website : [www.pratishthapharmacy.in](http://www.pratishthapharmacy.in), E-mail : [pratishtha-pharmacy@yahoo.com](mailto:pratishtha-pharmacy@yahoo.com)

### **POLICY FOR DISABLED STUDENTS**

#### **Admission Policy:**

1. The institution provides equal educational opportunities to disabled persons in higher education.
2. The Institution adheres to follow the instructions/orders/norms set by the University. Herewith a policy to follow JNTU Hyderabad admissions procedure.
3. The persons with disabilities (Equal opportunities protection of rights and full participation) Act, 1995 provide that all Government Educational institutions and other educational institutions receiving aid from the Government shall not reserve less than three present seats for persons with disabilities.

#### **Facilities:**

1. For physically disabled students ramps/elevators are provided for their easy access to all facilities on different floors and separate rest rooms to the disabled students.
2. In addition to the above minimum needs, the institution is ready to provide wheelchairs, care is taken to allot ground floor classrooms and other classrooms have elevator accessibility.
3. PIPS ensures a disabled-friendly physical infrastructure as per Annexure 'A' existing infrastructure to be dealt with in a phased manner

  
**PRINCIPAL**  
Pratishtha Institute of Pharmaceutical Sciences  
Duraipally (V), Chivemla (M), Suryapet (DL)-508213.



Regd. No. 732/2006

Mobile: 8499831950

## **PRATISHTA INSTITUTE OF PHARMACEUTICAL SCIENCES**

Approved by AICTE & PCI, New Delhi, Affiliated to JNTU and SBTET, Hyderabad & Recognised by Govt of Telangana

Durajpally (V), Chivemla (M), Suryapet District - 508 214, Telangana

Website : [www.pratishtaparmacy.in](http://www.pratishtaparmacy.in), E-mail : [pratishta-pharmacy@yahoo.com](mailto:pratishta-pharmacy@yahoo.com)

### **Academic Counseling & Career Advice:**

1. The institution is embedded with 'Equal opportunity cell' which takes care of counseling & Advising disabled students as a part of their responsibility.
2. Committee initiates to organize programs on world disabled day, white cane day etc., to enhance capabilities and confidence among them.

### **Use of Readers & Scribes for Exams:**

1. The institution takes proactive steps to support disabled students during examinations in terms of easy identification of rooms and accessible.
2. The examination table arranges in the right size and height  
Arrangement of scribes for exams considering the nature of the disability.

### **Faculty Responsibility:**

1. Faculty should implement best practices in teaching to reach learning among disabled.
2. Maintain the confidentiality of students who disclose their disability.
3. However, faculty members do have input and should work with students for their skill development.

  
**PRINCIPAL**

Pratishtha Institute of Pharmaceutical Sciences  
Durajpally (V), Chivemla (M), Suryapet (Dt.)-508213.



Regd. No. 732/2006

Mobile: 8499831950

## **PRATISHTA INSTITUTE OF PHARMACEUTICAL SCIENCES**

Approved by AICTE & PCI, New Delhi, Affiliated to JNTU and SBTET, Hyderabad & Recognised by Govt of Telangana  
Durajpally (V), Ghivemla (M), Suryapet District - 508 214, Telangana  
Website : [www.pratishthapharmacy.in](http://www.pratishthapharmacy.in), E-mail : [pratishtha\\_pharmacy@yahoo.com](mailto:pratishtha_pharmacy@yahoo.com)

### **7.1.7 DISABLED FRIENDLY REST ROOM WASH ROOM:**

Rest rooms are provided with clean and hygienic conditions in every building block. The rooms are constructed in the ground floor for the convenience of the students.



  
**PRINCIPAL**  
Pratishtha Institute of Pharmaceutical Sciences  
Durajpally (V), Ghivemla (M), Suryapet (DL)-508213.